

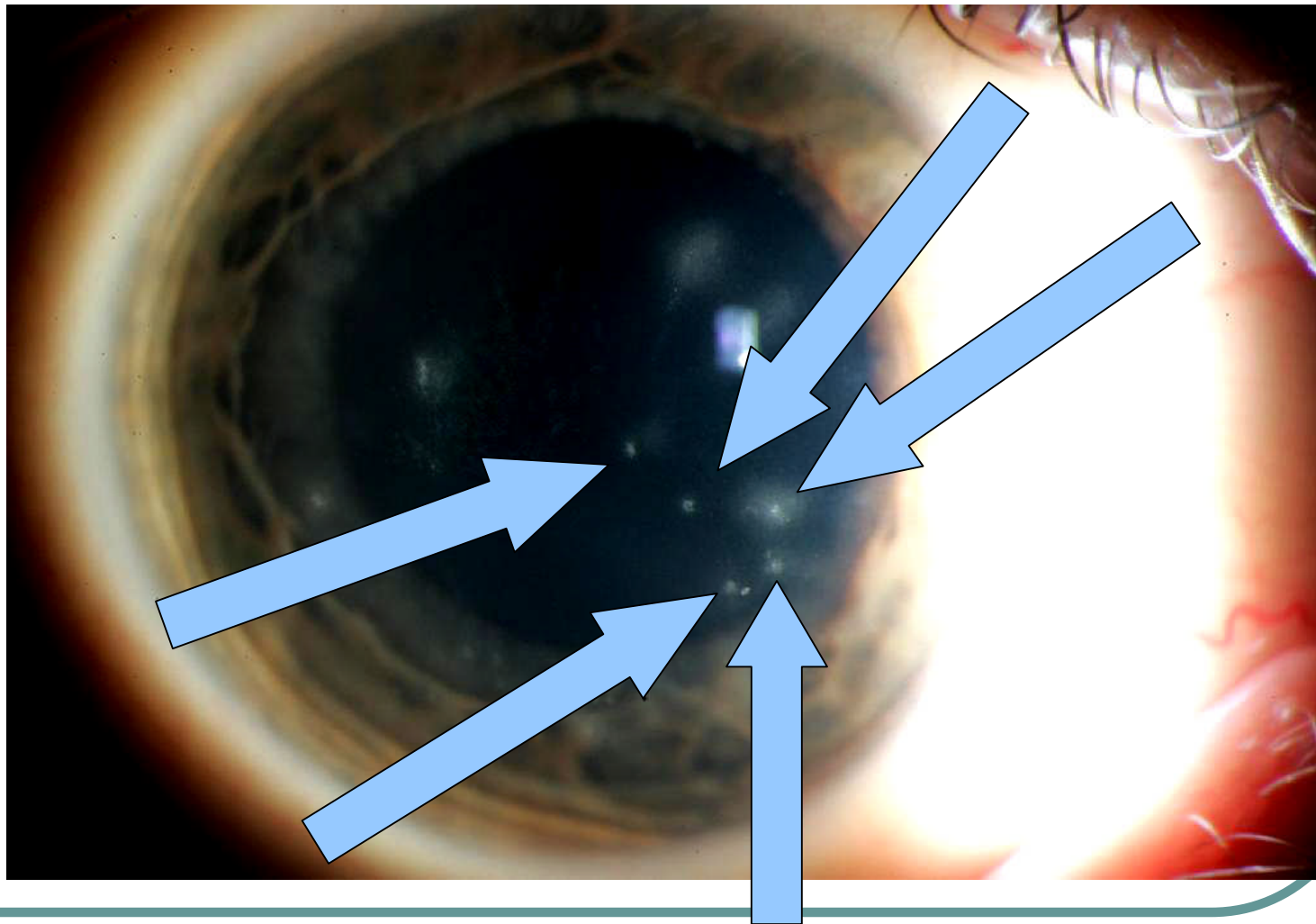
EL's TSPK Photos 2006

Slide 1 of 6

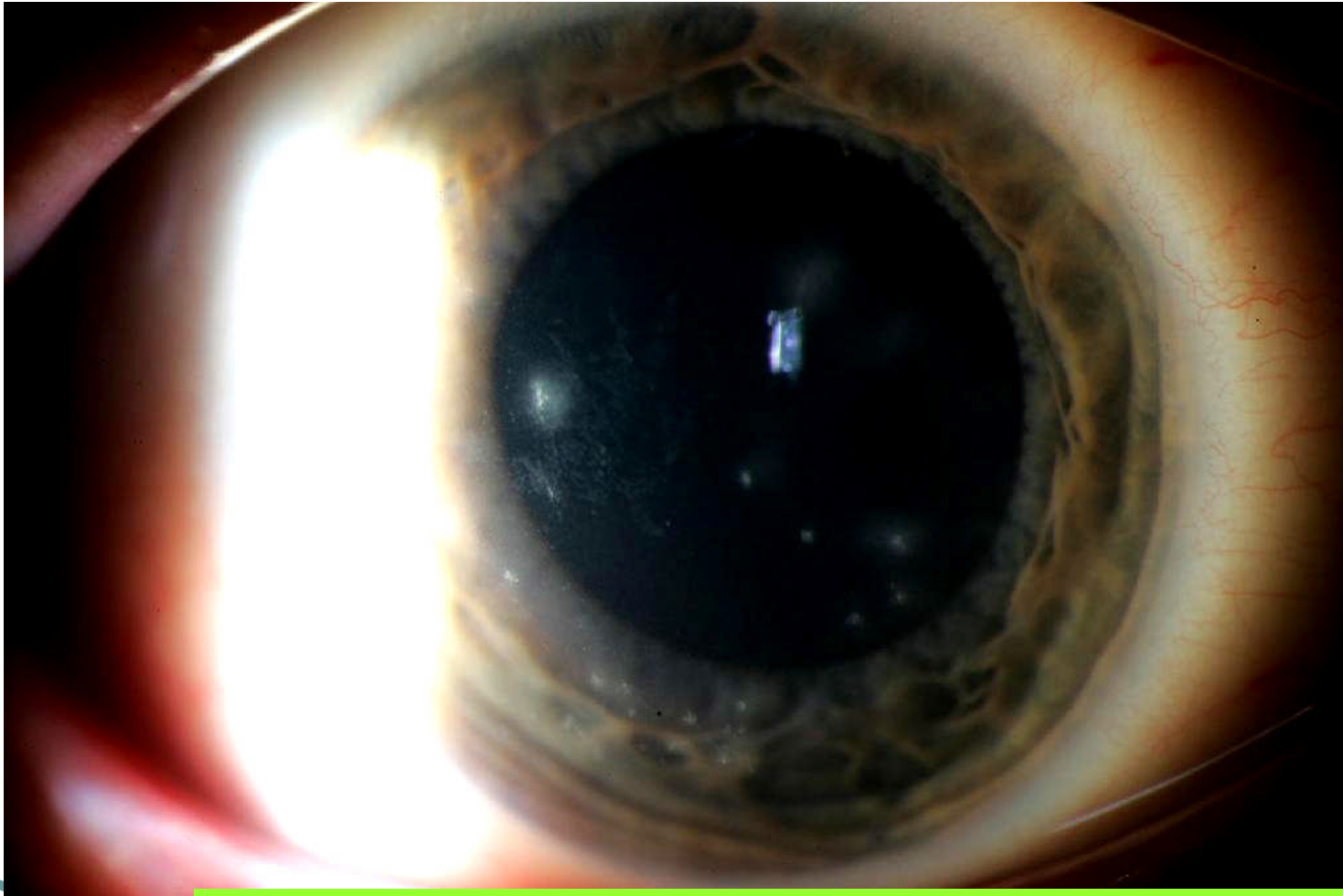
Eyes illuminated by a slit lamp.
Individual Thygeson's lesions look like
small, white dots on the clear, corneal
surface.

Right eye

Slide 2 of 6



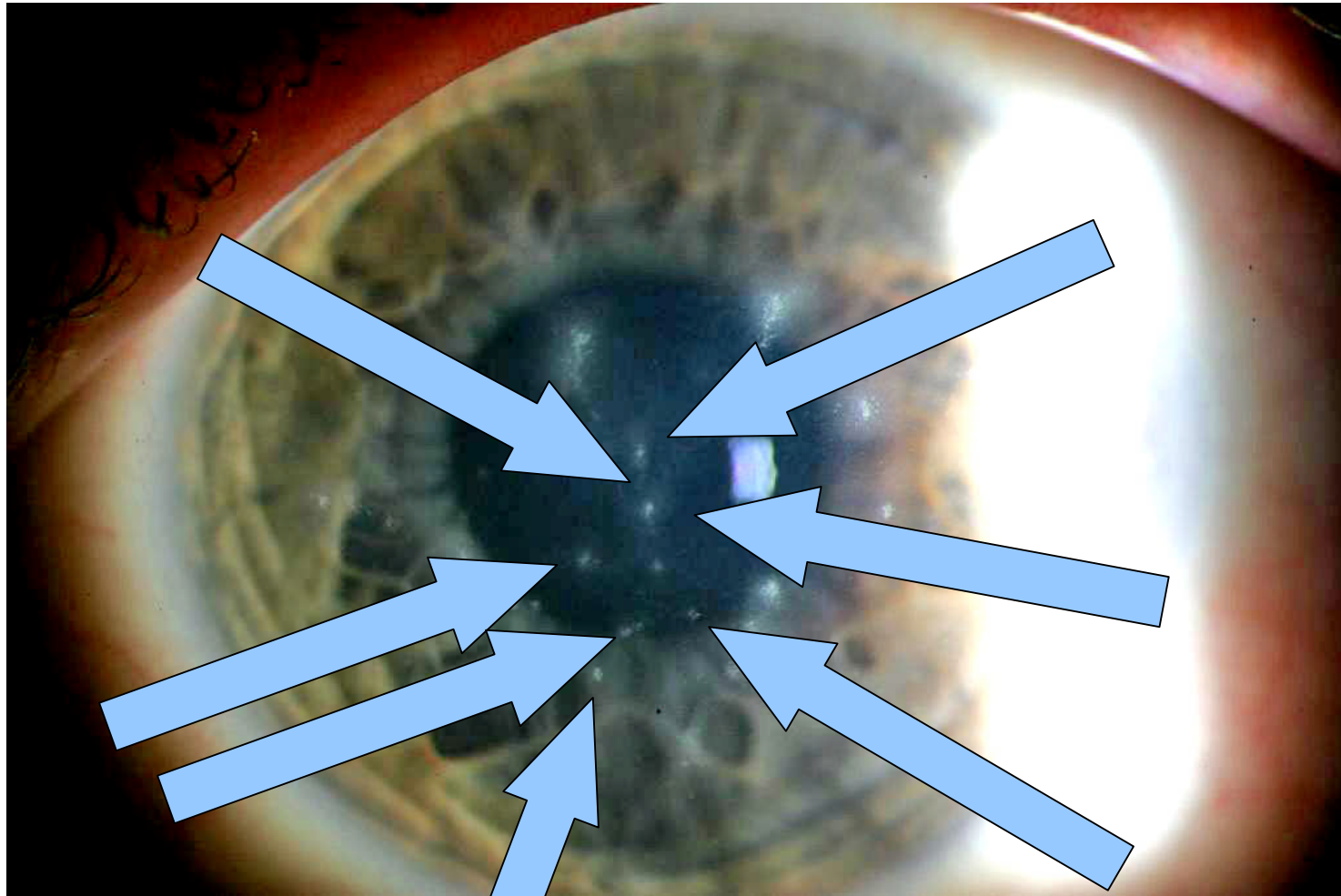
Right eye
Slide 3 of 6



Thygeson's lesions on the surface of the cornea

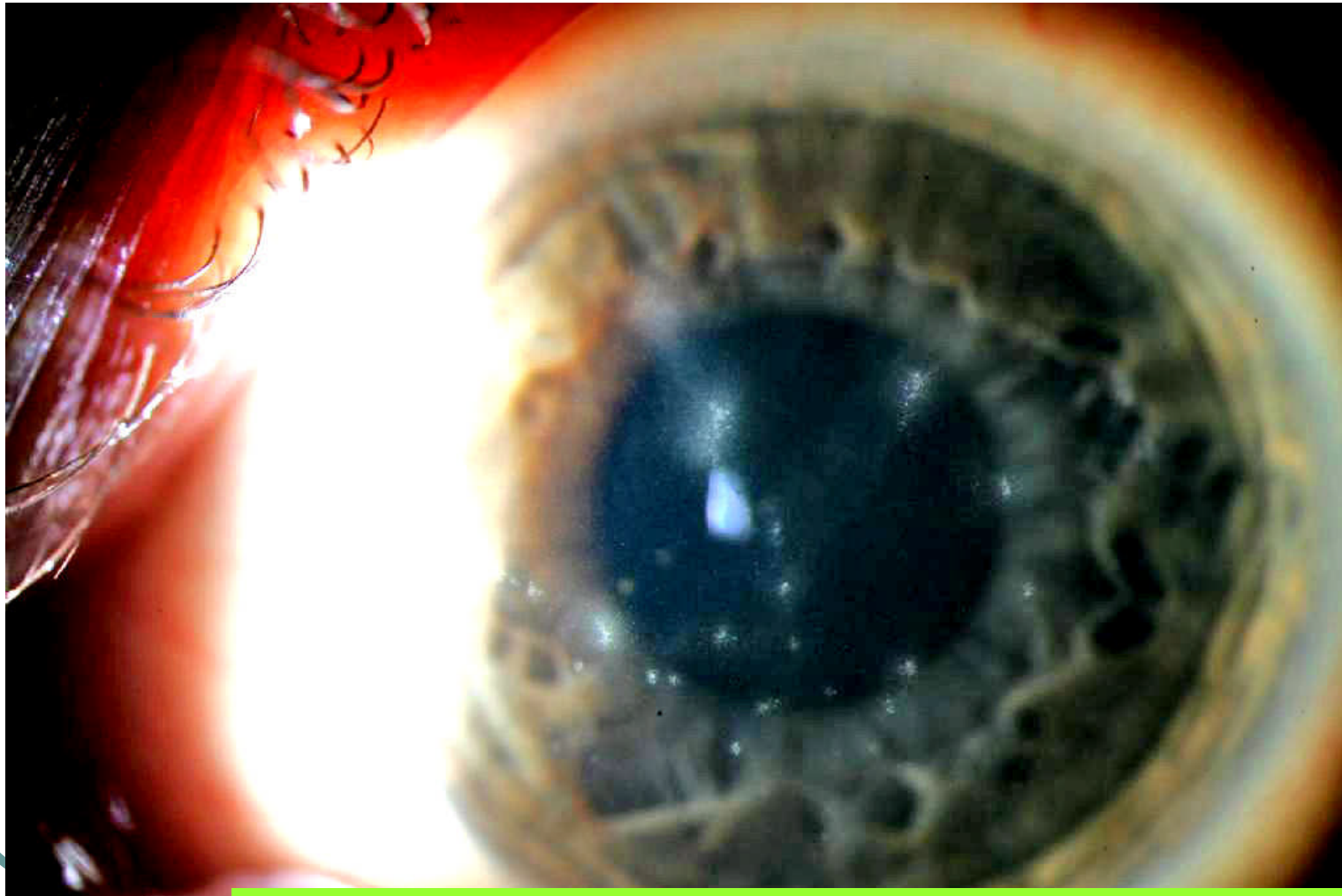
Left eye

Slide 4 of 6



Left eye

Slide 5 of 6



Thygeson's lesions on the surface of the cornea

Thanks for sharing EL!

Slide 6 of 6

THANK YOU

Teşekkürler

תודה

Merci

Hvala

Vielen Dank

شكراً

Grazie

Gracias

Obrigado!

ขอบคุณ

Ευχαριστώ

Bedankt

Діку

Köszönettel